

Utrecht Lighthouse project



Muriël Pels

ERRIN Smart Cities
project development seminar,
28 oktober 2015

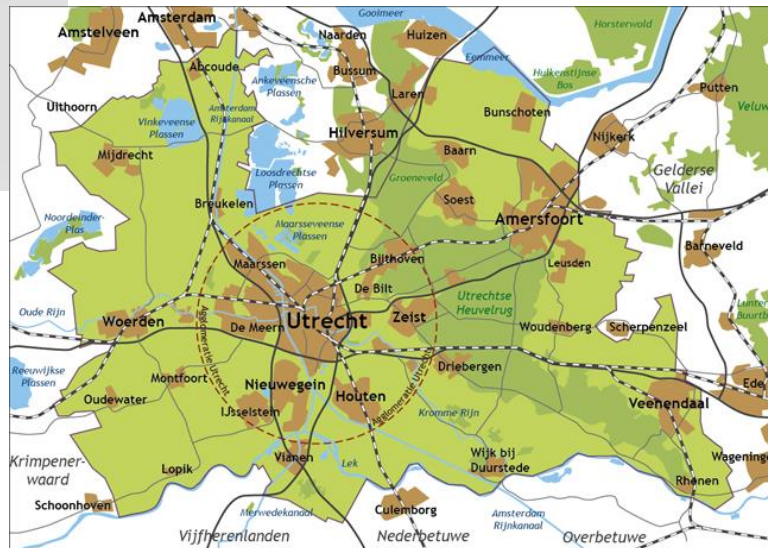


Gemeente Utrecht

Utrecht.nl

Utrecht in brief

City of 330.000 inhabitants
in region of 1,2 million

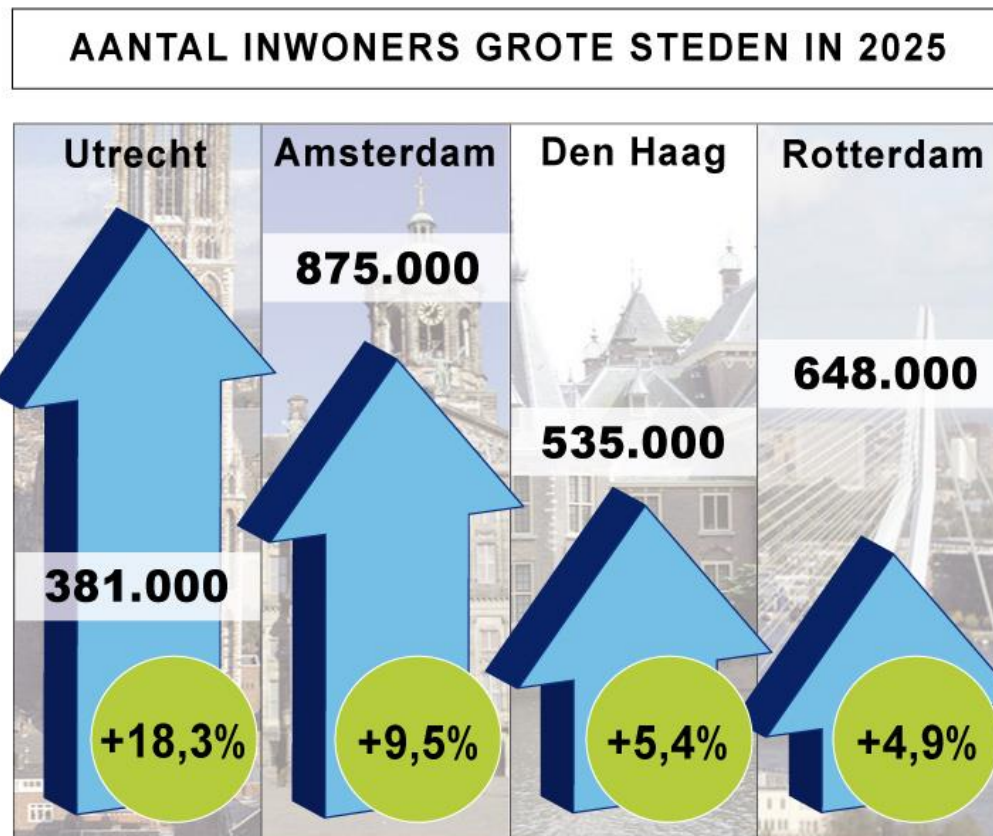


Gemeente Utrecht

Utrecht.nl

Utrecht is a growing city

→ 400.000 in 2030



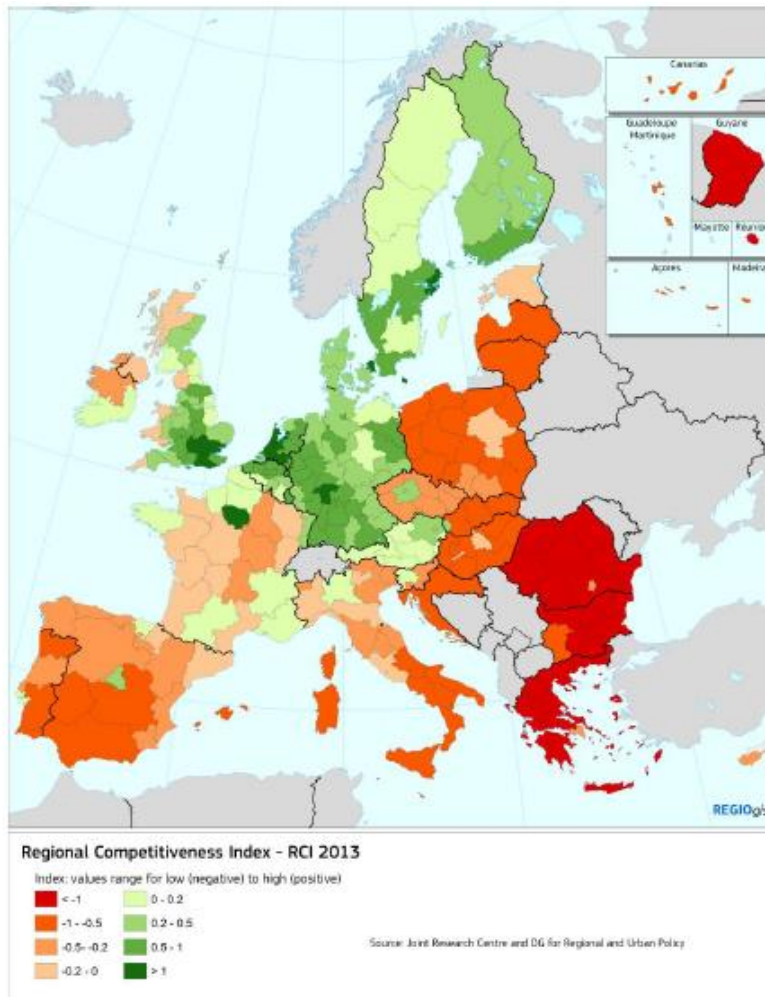
Bron: CBS / PBL oktober 2013; grafiek: DUB



Gemeente Utrecht

Utrecht.nl

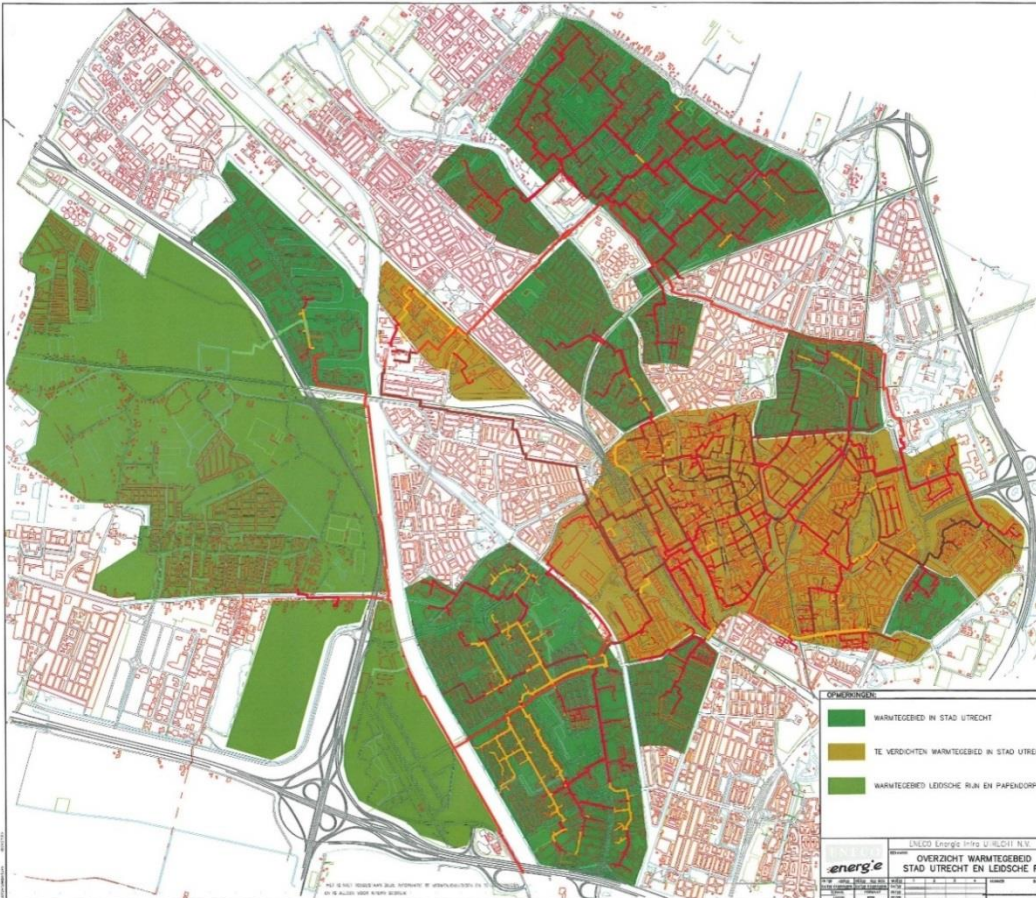
Utrecht is one of most competitive regions in Europe



region	RCI 2013
Utrecht	100
London area (Inner London, Outer London, Bedfordshire, Hertfordshire and Essex)	94
Berkshire, Buckinghamshire and Oxfordshire	94
Region of Stockholm	93
Surrey, East and West Sussex	91
Region of Amsterdam (Flevoland and Noord-Holland)	90
Region of Frankfurt (Darmstadt)	89
Region of Paris (Île de France)	89
Region of Copenhagen (Hovedstaden)	89
Zuid-Holland	88

Bron: JRC Scientific and policy reports; 2013

Energy consumption Utrecht: 1,5 million ton CO2/year



Electricity: 1,525 GWh
Gas: 249 million m³
Heat: 3 million GJ
Mobility: 978 million km's

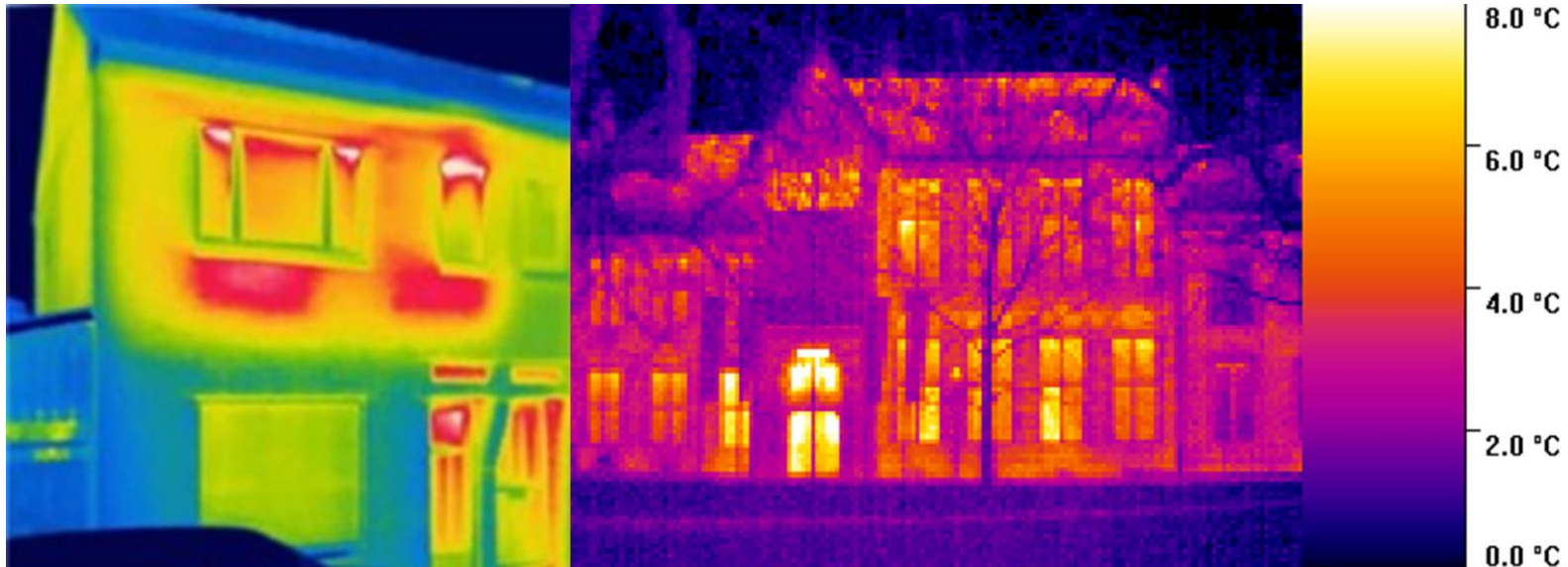


Gemeente Utrecht

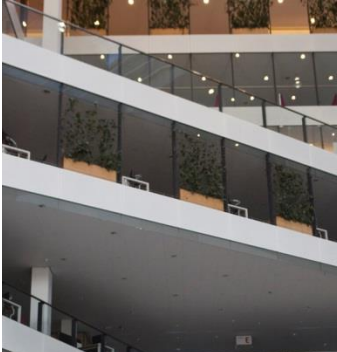
Utrecht.nl

29/10/2015

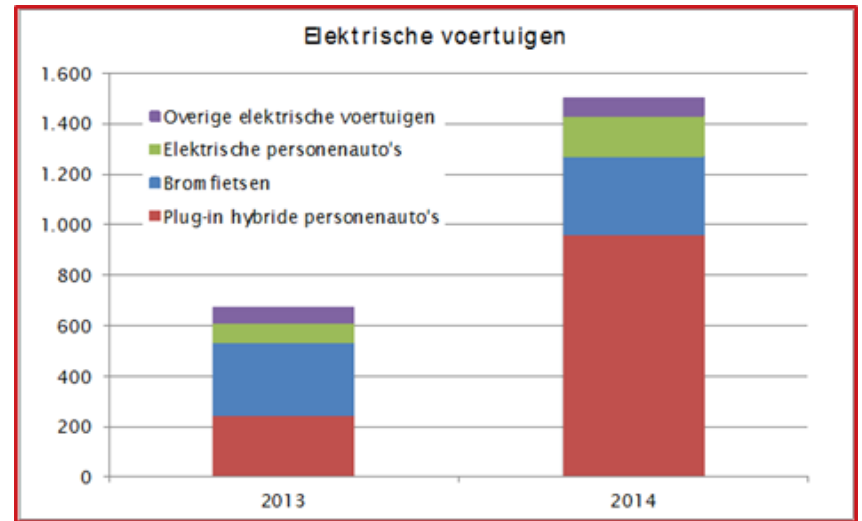
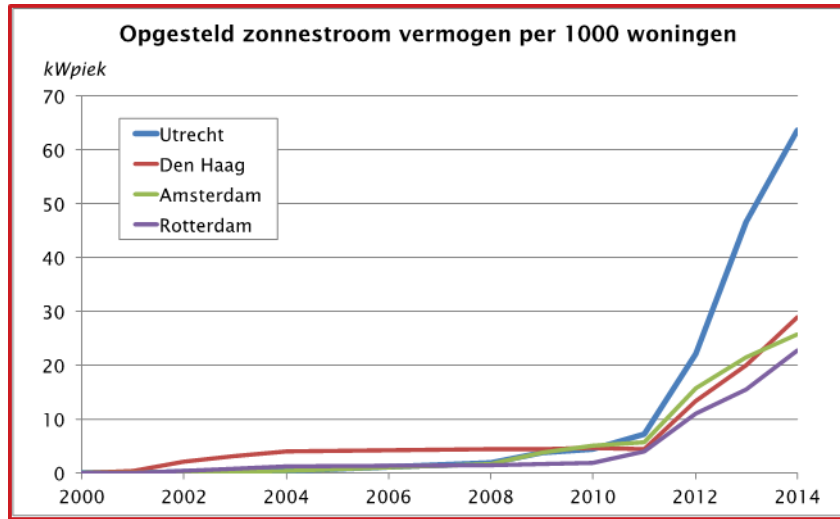
Sustainable Energy Action Plan Utrecht



City talks: silent majority speaks about Energy



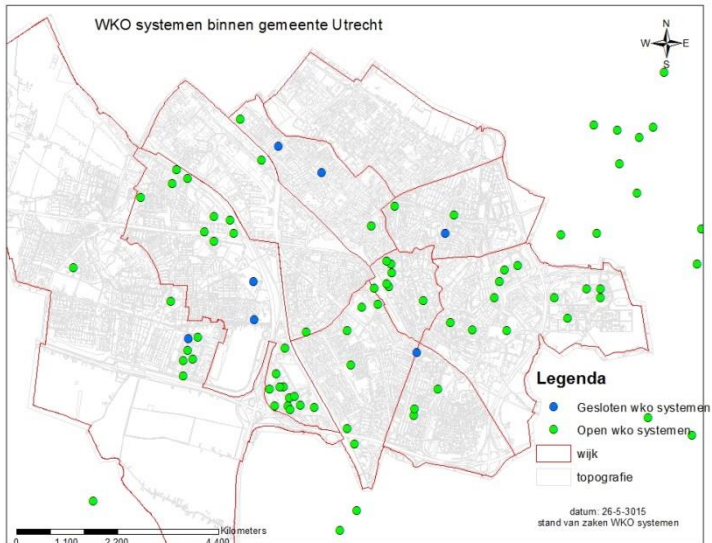
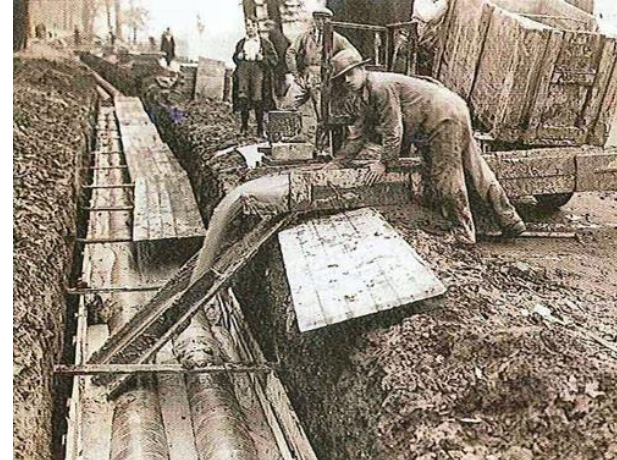
Decentralising energy system; electricity



Pilot Smart solar charging and smart grids



Decentralising energy system: heating and cooling



Pilot Net zero energy house



Lighthouse Utrecht: project elements

- Co-creation and participation
- Integrated deployment (production, distribution, storage)
- ICT support (platforms, open data / API's, interoperability, security)
- Business modeling
- Replication, dissemination, and training
- Performance monitoring and evaluation



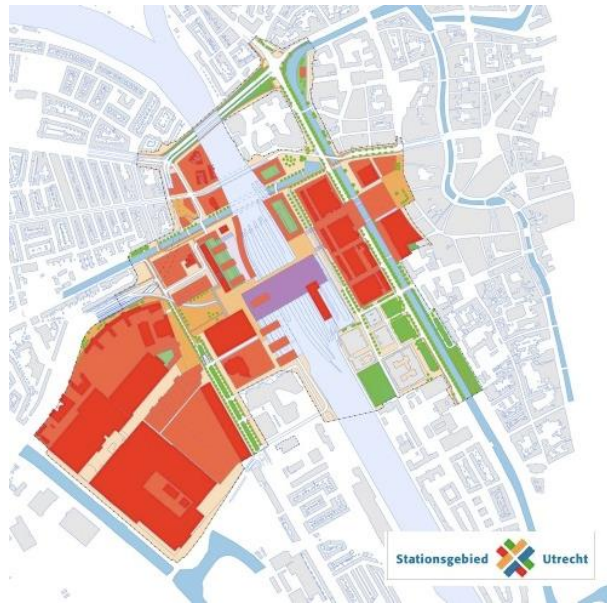
Lighthouse Utrecht: integrated deployment

- Smart energy-efficient buildings
- Smart grids
- Renewable energy production
- Energy storage
- E-vehicles and smart charging infra
- Latest generation ICT-platforms based on open specs



Lighthouse Utrecht: district

Utrecht Central Station area and adjacent Central-West district:



Lighthouse Utrecht: focus

What approach to engage citizens works best in the energy transition?

Hybridize innovation: co-creation, game-based learning, inclusive design.

Interactive, personal, and playful.



Thank you!

Questions? Want to know more? Please contact us!

Muriel: m.pels@utrecht.nl (EU cooperation and funding)

Inge: i.van.de.klundert@utrecht.nl (Energy)

